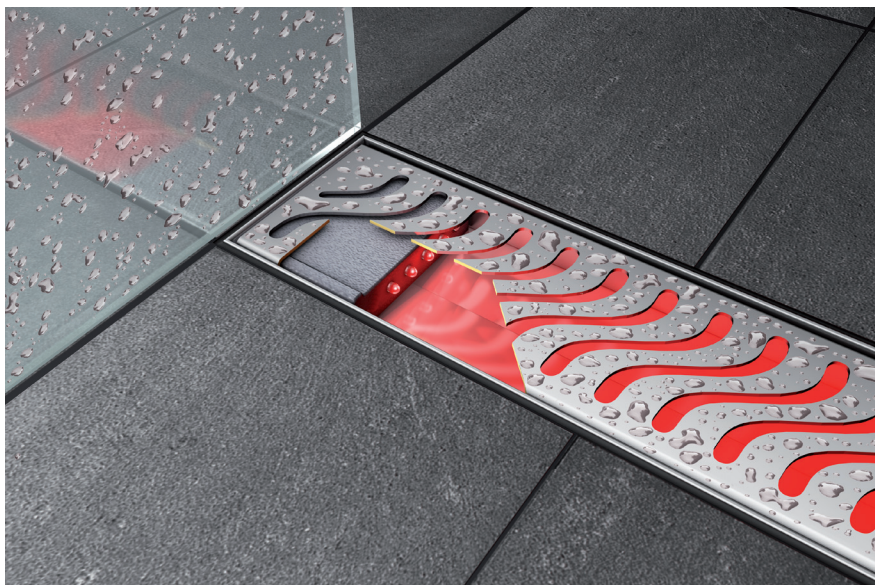


QuARTz by ACO ShowerDrain Lightline Installation & Operation

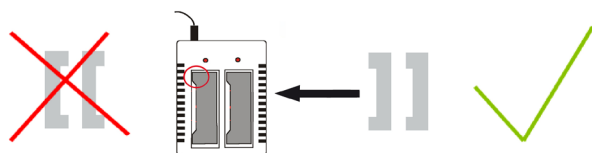


Product Description

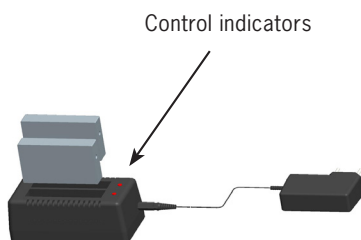
ACO Lightline contains two low-voltage battery-operated LED units which fit directly into the QuARTz by ACO ShowerDrain channel grating. These units will come on automatically as soon as they come in contact with water and will come off approximately two minutes after the shower is turned off.

Charging the LED Unit

The LED unit must be fully charged before installing for the first time. Make sure the LED unit is clean and dry, then insert it into the charger as shown in the picture below. Note the LED unit profile orientation before fitting it into the charger.



Connect the main adaptor to the charger and turn the power on. Control indicators will begin to blink. The charging process can take up to 18 hours to complete.



Note

The Indicators will blink quickly if the energy level in the LED unit is low. If the indicators continue to blink quickly for more than one hour, then the LED unit is defective and should be replaced.

Under normal conditions of use, a fully charged module should last approximately three months before needing a replacement.

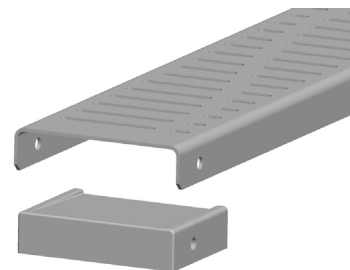
For optimum performance, always keep the LED unit fully charged to preserve their lifespan.

Installing the LED Unit

1. Remove the grating from the shower channel.

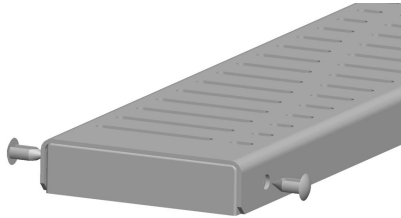


2. Remove the grating plastic locks from the sides of the grating and insert the LED unit making sure that the LEDs are facing toward the center of the grating while the angled top faces upward allowing water to drain freely.



ACO Lightline

3. Secure the LED unit to the grating using the plastic plugs provided.



Technical Data

LED Units:

Four LED units available in red, green, blue, and rainbow

Battery: 3.6V - 2700mAh

Charger:

Input: 110 - 249V AC - 50/60Hz, 180mA

Output: 9V DC - 600mA

4. Replace grating into the drain channel



Maintenance

Before charging the LED units, thoroughly clean and fully dry the entire surface prior to inserting them into the charger.

The supplied charger is to be used **ONLY** with the ACO Lightline LED units. Use of this charger with any other rechargeable batteries may result in severe damage to the unit.



Be sure to exercise extreme caution when handling electrical devices around water.

ACO Polymer Products, Inc.

P.O. Box 12067
Casa Grande, AZ 85130
Tel: (520) 421-9988
Toll Free: (800) 490-9552
Fax: (520) 421-9899
www.acousa.com
www.QuARTzbyACO.com

Qu**ARTz** by ACO

A brand of ACO Polymer Products, Inc.